



PATROON- INFO

Dit is de lay-out van beide dekens. De nummers zijn de nummers van de delen. Zoals je kunt zien worden alle delen 4 keer gemaakt behalve de middelste van de Large deken. In deel 5 vind je ook hoe je de randen voor **beide** dekens kunt haken.

Mijn dekens zijn vierkant, maar van de kleine deken kun je heel gemakkelijk een rechthoek maken door deel 5 en 6 twee keer te haken.

Het belangrijkste is dat je je steken tussen de hoeken, **BLIJFT TELLEN!** Omdat je gemakkelijk een foutje kan maken en deze is dan zo gevonden. In het begin valt het wel mee om een ronde uit te halen, maar er zijn ook rondes van 150+ steken. Dus tel je steken dan vind je een fout vlak voordat je de volgende hoek moet maken.

In de meeste delen vind alle 4 de driehoeken. Kijk goed want de eerste 16 toeren van elk vierkant zijn hetzelfde, maar daarna kan het compleet verschillend zijn voor alle driehoeken. **Let er op dat je de volgorde van de driehoeken niet door elkaar gooit!**

Het schema is verdeelt over 2 pagina's en in kleur. Ik maak gebruik van kleuren omdat je de schema's dan makkelijker kunt 'lezen'. Als je een zwart/wit printer hebt is het geen probleem want de kleuren hebben genoeg contrast.

The chart is divided over 2 pages and in color. I used colors to make it easier to 'read' the pattern. If you have a black/white printer it is no problem because the colors have enough contrast.

1	2	3	1
3	4	4	2
2	4	4	3
1	3	2	1

1	2	5	3	1
3	4	6	4	2
5	6	7	6	5
2	4	6	4	3
1	3	5	2	1

TERUGGAANDE TOER

Bevestigen : schuif en draai, PT 1 lus

schuif en draai, PT 2 lussen totdat je 5 lussen op de naald hebt, schuif en draai tot de laatste toer.

HET PATROON

Maak dit vierkant 4 keer.

Als je een nieuwe bol garen halverwege de TERUGGAANDE TOER wilt starten moet je dit een beetje plannen! Je moet dit doen in de 1st half corner (het eerste deel van de hoek). Als je het ergens anders doet zul je dit kunnen zien!

HOE START JE EEN VIERKANT

Hier is een verkorte instructie hoe je met een vierkant begint. De complete instructie vind je in de tutorial.

	12	11	10	9	8	7	6	5	4	3	2	1	
3	~	~	~	~	~	~	~	~	~	~	~	~	
	V	o	oo	V	o	oo	V	o	oo	V	o	oo	3
2	~	~	~	~	~	~	~	~	~	~	~	~	
	o	o	o	o	o	o	o	o	o	o	o	o	2
1		~		~		~		~		~		~	
		T		T		T		T		T		T	1
	12	11	10	9	8	7	6	5	4	3	2	1	

Ronde 1

Magische Cirkel (1 lus op de naald), 5 TES (6 lissen op de naald)

Ronde 2

Sluit de Magische cirkel

6 x (TKS, TFS)

Ronde 3

(2nd half corner), TKS, (1st half corner),

(2nd half corner), TKS, (1st half corner),

(2nd half corner), TKS, (1st half corner),

(2nd half corner), TKS, (1st half corner)

Op de laatste 2 pagina's vindt je het schema vanaf ronde 4. Hieronder vind je het geschreven patroon voor het gehele vierkant.

Ronde 4

(2nd half corner), 3TKS, (1st half corner),

(2nd half corner), 3TKS, (1st half corner),

(2nd half corner), 3TKS, (1st half corner),

(2nd half corner), 3TKS, (1st half corner)

Ronde 5

(2nd half corner), TKS, TRS, TKS, TRS, TKS, (1st half corner),
(2nd half corner), TKS, TRS, TKS, TRS, TKS, (1st half corner),
(2nd half corner), TKS, TRS, TKS, TRS, TKS, (1st half corner),
(2nd half corner), TKS, TRS, TKS, TRS, TKS, (1st half corner)

Ronde 6

(2nd half corner), TKS, 2TRS, TKS, 2TRS, TKS, (1st half corner),
(2nd half corner), TKS, 2TRS, TKS, 2TRS, TKS, (1st half corner),
(2nd half corner), TKS, 2TRS, TKS, 2TRS, TKS, (1st half corner),
(2nd half corner), TKS, 2TRS, TKS, 2TRS, TKS, (1st half corner)

Ronde 7

(2nd half corner), TKS, 2TRS, 3TKS, 2TRS, TKS, (1st half corner),
(2nd half corner), TKS, 2TRS, 3TKS, 2TRS, TKS, (1st half corner),
(2nd half corner), TKS, 2TRS, 3TKS, 2TRS, TKS, (1st half corner),
(2nd half corner), TKS, 2TRS, 3TKS, 2TRS, TKS, (1st half corner)

Ronde 8

(2nd half corner), TKS, 2TRS, 5TKS, 2TRS, TKS, (1st half corner),
(2nd half corner), TKS, 2TRS, 5TKS, 2TRS, TKS, (1st half corner),
(2nd half corner), TKS, 2TRS, 5TKS, 2TRS, TKS, (1st half corner),
(2nd half corner), TKS, 2TRS, 5TKS, 2TRS, TKS, (1st half corner)

Ronde 9

(2nd half corner), TKS, 2TRS, 7TKS, 2TRS, TKS, (1st half corner),
(2nd half corner), TKS, 2TRS, 7TKS, 2TRS, TKS, (1st half corner),
(2nd half corner), TKS, 2TRS, 7TKS, 2TRS, TKS, (1st half corner),
(2nd half corner), TKS, 2TRS, 7TKS, 2TRS, TKS, (1st half corner)

Ronde 10

(2nd half corner), TKS, 2TRS, TKS, 2TRS, 3TKS, 2TRS, TKS, 2TRS, TKS, (1st half corner),
(2nd half corner), TKS, 2TRS, TKS, 2TRS, 3TKS, 2TRS, TKS, 2TRS, TKS, (1st half corner),
(2nd half corner), TKS, 2TRS, TKS, 2TRS, 3TKS, 2TRS, TKS, 2TRS, TKS, (1st half corner),
(2nd half corner), TKS, 2TRS, TKS, 2TRS, 3TKS, 2TRS, TKS, 2TRS, TKS, (1st half corner)

Ronde 11

(2nd half corner), TKS, 2TRS, TKS, 9TRS, TKS, 2TRS, TKS, (1st half corner),

(2nd half corner), TKS, 2TRS, TKS, 9TRS, TKS, 2TRS, TKS, (1st half corner),

(2nd half corner), TKS, 2TRS, TKS, 9TRS, TKS, 2TRS, TKS, (1st half corner),

(2nd half corner), TKS, 2TRS, TKS, 9TRS, TKS, 2TRS, TKS, (1st half corner)

Ronde 12

(2nd half corner), TKS, 2TRS, TKS, 2TRS, 2TKS, 3TRS, 2TKS, 2TRS, TKS, 2TRS, TKS, (1st half corner),

(2nd half corner), TKS, 2TRS, TKS, 2TRS, 2TKS, 3TRS, 2TKS, 2TRS, TKS, 2TRS, TKS, (1st half corner),

(2nd half corner), TKS, 2TRS, TKS, 2TRS, 2TKS, 3TRS, 2TKS, 2TRS, TKS, 2TRS, TKS, (1st half corner),

(2nd half corner), TKS, 2TRS, TKS, 2TRS, 2TKS, 3TRS, 2TKS, 2TRS, TKS, 2TRS, TKS, (1st half corner)

Ronde 13

(2nd half corner), TKS, 2TRS, TKS, 2TRS, TKS, 2TRS, TKS, TRS, TKS, 2TRS, TKS, 2TRS, TKS, 2TRS, TKS, (1st half corner),

(2nd half corner), TKS, 2TRS, TKS, 2TRS, TKS, 2TRS, TKS, TRS, TKS, 2TRS, TKS, 2TRS, TKS, 2TRS, TKS, (1st half corner),

(2nd half corner), TKS, 2TRS, TKS, 2TRS, TKS, 2TRS, TKS, TRS, TKS, 2TRS, TKS, 2TRS, TKS, 2TRS, TKS, (1st half corner),

(2nd half corner), TKS, 2TRS, TKS, 2TRS, TKS, 2TRS, TKS, TRS, TKS, 2TRS, TKS, 2TRS, TKS, 2TRS, TKS, (1st half corner)

Ronde 14

(2nd half corner), TKS, 3TRS, TKS, 5TRS, TKS, TRS, TKS, 5TRS, TKS, 3TRS, TKS, (1st half corner),

(2nd half corner), TKS, 3TRS, TKS, 5TRS, TKS, TRS, TKS, 5TRS, TKS, 3TRS, TKS, (1st half corner),

(2nd half corner), TKS, 3TRS, TKS, 5TRS, TKS, TRS, TKS, 5TRS, TKS, 3TRS, TKS, (1st half corner),

(2nd half corner), TKS, 3TRS, TKS, 5TRS, TKS, TRS, TKS, 5TRS, TKS, 3TRS, TKS, (1st half corner)

Ronde 15

(2nd half corner), TKS, 5TRS, TKS, 3TRS, TKS, 3TRS, TKS, 3TRS, TKS, 5TRS, TKS, (1st half corner),

(2nd half corner), TKS, 5TRS, TKS, 3TRS, TKS, 3TRS, TKS, 3TRS, TKS, 5TRS, TKS, (1st half corner),

(2nd half corner), TKS, 5TRS, TKS, 3TRS, TKS, 3TRS, TKS, 3TRS, TKS, 5TRS, TKS, (1st half corner),

(2nd half corner), TKS, 5TRS, TKS, 3TRS, TKS, 3TRS, TKS, 3TRS, TKS, 5TRS, TKS, (1st half corner)

Ronde 16

(2nd half corner), TKS, 7TRS, 3TKS, 5TRS, 3TKS, 7TRS, TKS, (1st half corner),
(2nd half corner), TKS, 7TRS, 3TKS, 5TRS, 3TKS, 7TRS, TKS, (1st half corner),
(2nd half corner), TKS, 7TRS, 3TKS, 5TRS, 3TKS, 7TRS, TKS, (1st half corner),
(2nd half corner), TKS, 7TRS, 3TKS, 5TRS, 3TKS, 7TRS, TKS, (1st half corner)

Ronde 17

(2nd half corner), TKS, 27TRS, TKS, (1st half corner),
(2nd half corner), TKS, 27TRS, TKS, (1st half corner),
(2nd half corner), TKS, 27TRS, TKS, (1st half corner),
(2nd half corner), TKS, 27TRS, TKS, (1st half corner)

Ronde 18

(2nd half corner), 2TKS, 8TRS, 3TKS, 5TRS, 3TKS, 5TRS, 5TKS, (1st half corner),
(2nd half corner), 5TKS, 5TRS, 3TKS, 5TRS, 3TKS, 8TRS, 2TKS, (1st half corner),
(2nd half corner), 2TKS, 24TRS, 5TKS, (1st half corner),
(2nd half corner), 5TKS, 24TRS, 2TKS, (1st half corner)

Ronde 19

(2nd half corner), TKS, TRS, 2TKS, 6TRS, TKS, 3TRS, TKS, 3TRS, TKS, 3TRS, TKS, 4TRS, TKS,
4TRS, TKS, (1st half corner),
(2nd half corner), TKS, 4TRS, TKS, 4TRS, TKS, 3TRS, TKS, 3TRS, TKS, 3TRS, TKS, 6TRS, 2TKS,
TRS, TKS, (1st half corner),
(2nd half corner), TKS, TRS, 2TKS, 23TRS, TKS, 4TRS, TKS, (1st half corner),
(2nd half corner), TKS, 4TRS, TKS, 23TRS, 2TKS, TRS, TKS, (1st half corner)

Ronde 20

(2nd half corner), 2TKS, 2TRS, 2TKS, 4TRS, TKS, 5TRS, TKS, TRS, TKS, 5TRS, TKS, 3TRS, TKS,
TRS, 5TKS, (1st half corner),
(2nd half corner), 5TKS, TRS, TKS, 3TRS, TKS, 5TRS, TKS, TRS, TKS, 5TRS, TKS, 4TRS, 2TKS,
2TRS, 2TKS, (1st half corner),
(2nd half corner), 2TKS, 2TRS, 2TKS, 22TRS, TKS, TRS, 5TKS, (1st half corner),
(2nd half corner), 5TKS, TRS, TKS, 22TRS, 2TKS, 2TRS, 2TKS, (1st half corner)

Ronde 21

(2nd half corner), TKS, TRS, 2TKS, 2TRS, 2TKS, 3TRS, TKS, 2TRS, TKS, 2TRS, TKS, TRS, TKS, 2TRS, TKS, 2TRS, TKS, 3TRS, TKS, TRS, TKS, 4TRS, TKS, (1st half corner),

(2nd half corner), TKS, 4TRS, TKS, TRS, TKS, 3TRS, TKS, 2TRS, TKS, 2TRS, TKS, TRS, TKS, 2TRS, TKS, 2TRS, TKS, 3TRS, 2TKS, 2TRS, 2TKS, TRS, TKS, (1st half corner),

(2nd half corner), TKS, TRS, 2TKS, 2TRS, 2TKS, 21TRS, TKS, TRS, TKS, 4TRS, TKS, (1st half corner),

(2nd half corner), TKS, 4TRS, TKS, TRS, TKS, 21TRS, 2TKS, 2TRS, 2TKS, TRS, TKS, (1st half corner)

Ronde 22

(2nd half corner), 2TKS, 2TRS, 2TKS, 2TRS, 2TKS, 3TRS, 2TKS, 3TRS, TKS, TRS, TKS, 3TRS, 2TKS, 4TRS, TKS, TRS, TKS, TRS, 5TKS, (1st half corner),

(2nd half corner), 5TKS, TRS, TKS, TRS, TKS, 4TRS, 2TKS, 3TRS, TKS, TRS, TKS, 3TRS, 2TKS, 3TRS, 2TKS, 2TRS, 2TKS, 2TRS, 2TKS, (1st half corner),

(2nd half corner), 2TKS, 2TRS, 2TKS, 2TRS, 2TKS, 20TRS, TKS, TRS, TKS, TRS, 5TKS, (1st half corner),

(2nd half corner), 5TKS, TRS, TKS, TRS, TKS, 20TRS, 2TKS, 2TRS, 2TKS, 2TRS, 2TKS, (1st half corner)

Ronde 23

(2nd half corner), 4TKS, 2TRS, 2TKS, 2TRS, 2TKS, 7TRS, TKS, TRS, TKS, 9TRS, TKS, TRS, TKS, TRS, TKS, 4TRS, TKS, (1st half corner),

(2nd half corner), TKS, 4TRS, TKS, TRS, TKS, TRS, TKS, 9TRS, TKS, TRS, TKS, 7TRS, 2TKS, 2TRS, 2TKS, 2TRS, 4TKS, (1st half corner),

(2nd half corner), 4TKS, 2TRS, 2TKS, 2TRS, 2TKS, 19TRS, TKS, TRS, TKS, TRS, TKS, 4TRS, TKS, (1st half corner),

(2nd half corner), TKS, 4TRS, TKS, TRS, TKS, TRS, TKS, 19TRS, 2TKS, 2TRS, 2TKS, 2TRS, 4TKS, (1st half corner)

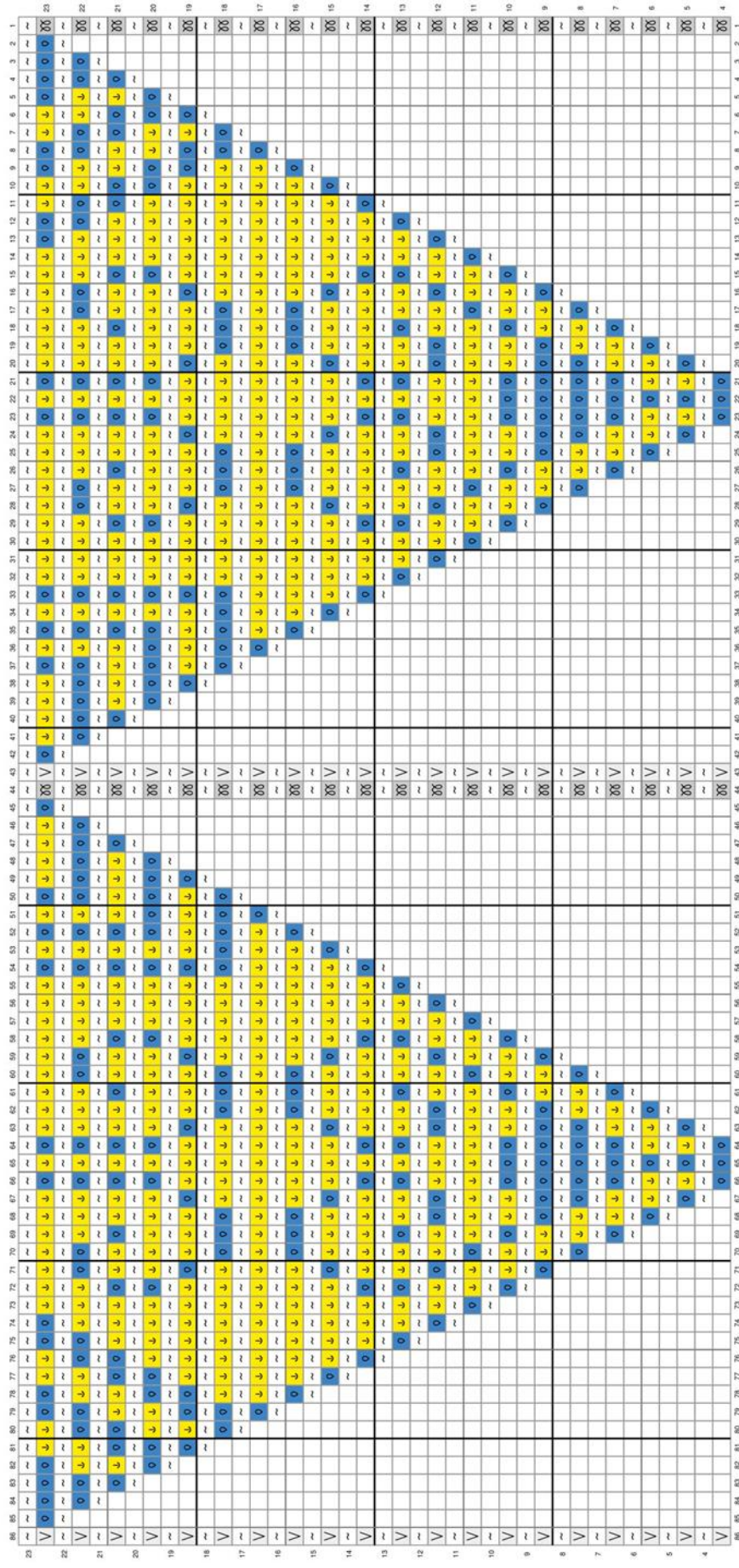
AFHECHTEN

Er zijn verschillende manieren om de bind off (afhecht) toer te maken, ik heb als volgt gewerkt:

Maak alle teruggaande steken en laat 1 lus van kleur 2 op de naald. Steek je naald in als een **TKS**, YO kleur 1 en PT de steek en door de lus op de naald (halve vaste) (1 lus op de naald). Meerder NIET op de hoeken! Sluit de ronde met een halve vaste in de eerste halve vaste.

Werk alle draden weg.

Maak dit vierkant 4 keer.



- No Stitch
- ∞ 2nd half corner
- TKS
- ↓ TRS
- ~ Return
- ∨ 1st half corner

A large grid for a crossword puzzle with 23 rows and 111 columns. The grid contains various symbols: blue and yellow squares, empty squares, and squares containing '0', 'V', or '00'. The grid is oriented vertically on the page.